

Rectifier diodes schottky barrier

PBYR3045PT series

GENERAL DESCRIPTION

Dual, low leakage, platinum barrier, schottky rectifier diodes in a plastic envelope featuring low forward voltage drop and absence of stored charge. These devices can withstand reverse voltage transients and have guaranteed reverse surge capability. The devices are intended for use in switched mode power supplies and high frequency circuits in general where low conduction and zero switching losses are important.

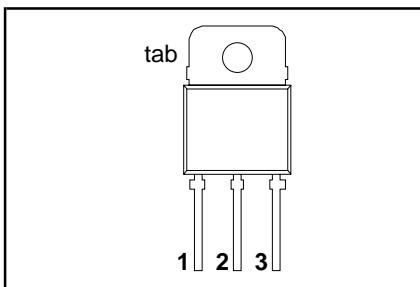
QUICK REFERENCE DATA

| SYMBOL | PARAMETER | MAX. | MAX. | MAX. | UNIT |
|-------------|---|-------------------|-------------------|-------------------|------|
| V_{RRM} | PBYR30- Repetitive peak reverse voltage | 35PT 35 | 40PT 40 | 45PT 45 | V |
| V_F | Forward voltage | 0.60 | 0.60 | 0.60 | V |
| $I_{O(AV)}$ | Output current (both diodes conducting) | 30 | 30 | 30 | A |

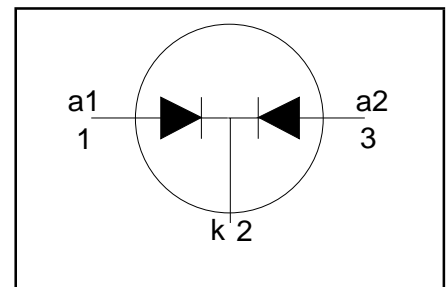
PINNING - SOT93

| PIN | DESCRIPTION |
|-----|-------------|
| 1 | Anode 1 (a) |
| 2 | Cathode (k) |
| 3 | Anode 2 (a) |
| tab | Cathode (k) |

PIN CONFIGURATION



SYMBOL



LIMITING VALUES

Limiting values in accordance with the Absolute Maximum System (IEC 134).

| SYMBOL | PARAMETER | CONDITIONS | MIN. | MAX. | | | UNIT |
|---------------------|--|---|-----------|------|-----|-----|------------------|
| V _{RRM} | Repetitive peak reverse voltage | T _{mb} ≤ 136 °C | - | -35 | -40 | -45 | V |
| V _{RWM} | Crest working reverse voltage | | - | 35 | 40 | 45 | V |
| V _R | Continuous reverse voltage | | - | 35 | 40 | 45 | V |
| I _{O(AV)} | Output current (both diodes conducting) ¹ | square wave; δ = 0.5; T _{mb} ≤ 130 °C | - | 30 | | | A |
| I _{O(RMS)} | RMS forward current | t = 25 μs; δ = 0.5; T _{mb} ≤ 130 °C | - | 43 | | | A |
| I _{FRM} | Repetitive peak forward current per diode | | - | 30 | | | A |
| I _{FSM} | Non-repetitive peak forward current per diode | | t = 10 ms | - | 180 | | |
| | | t = 8.3 ms sinusoidal T _j = 125 °C prior to surge; with reapplied | - | 200 | | | A |
| I ² t | I ² t for fusing | V _{RWM(max)} t = 10 ms | - | 162 | | | A ² s |
| I _{RRM} | Repetitive peak reverse current per diode. | t _p = 2 μs; δ = 0.001 | - | 2 | | | A |
| I _{RSM} | Non-repetitive peak reverse current per diode. | t _p = 100 μs | - | 2 | | | A |
| T _{stg} | Storage temperature | | -65 | 175 | | | °C |
| T _j | Operating junction temperature | | - | 150 | | | °C |

¹ For output currents in excess of 20 A connection should be made to the exposed metal mounting base.

Rectifier diodes schottky barrier

PBYR3045PT series

THERMAL RESISTANCES

| SYMBOL | PARAMETER | CONDITIONS | MIN. | TYP. | MAX. | UNIT |
|----------------|--|--------------------------|------|------|------|------|
| $R_{th\ j-mb}$ | Thermal resistance junction to mounting base | per diode | - | - | 1.4 | K/W |
| $R_{th\ j-a}$ | Thermal resistance junction to ambient | both diodes in free air. | - | - | 1.0 | K/W |
| | | | - | 45 | - | K/W |

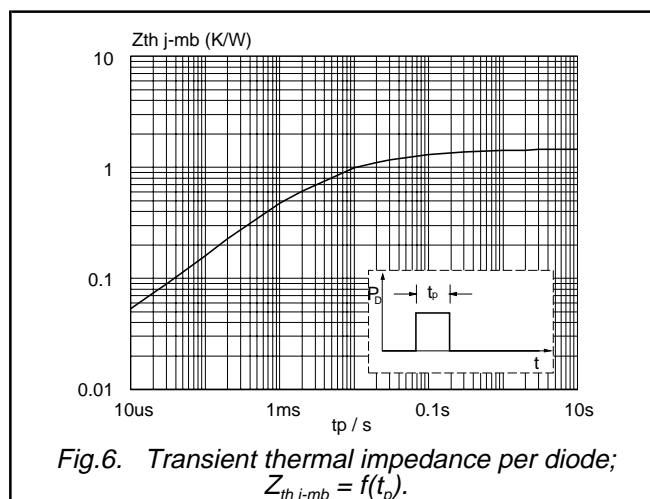
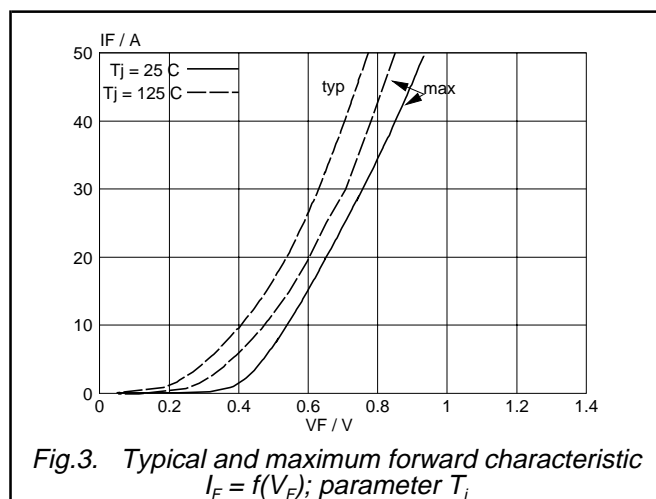
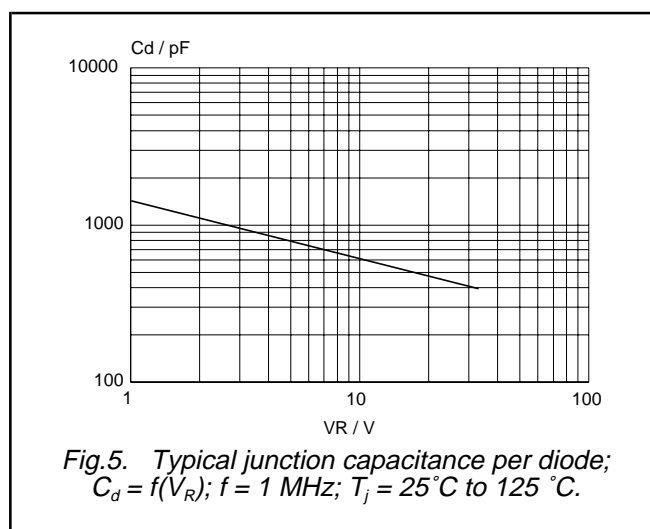
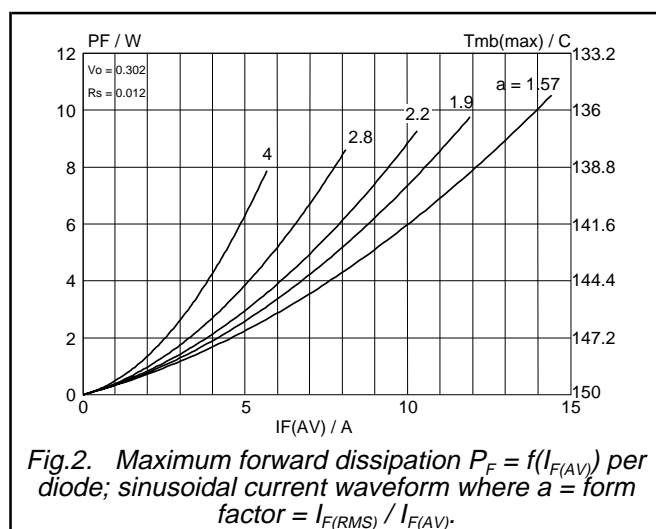
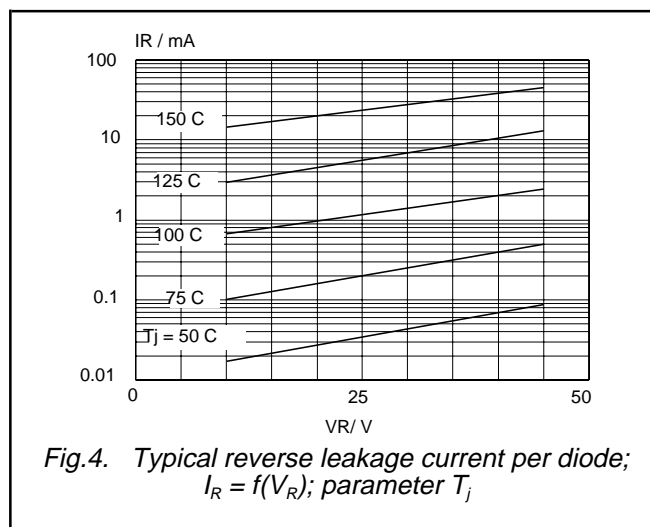
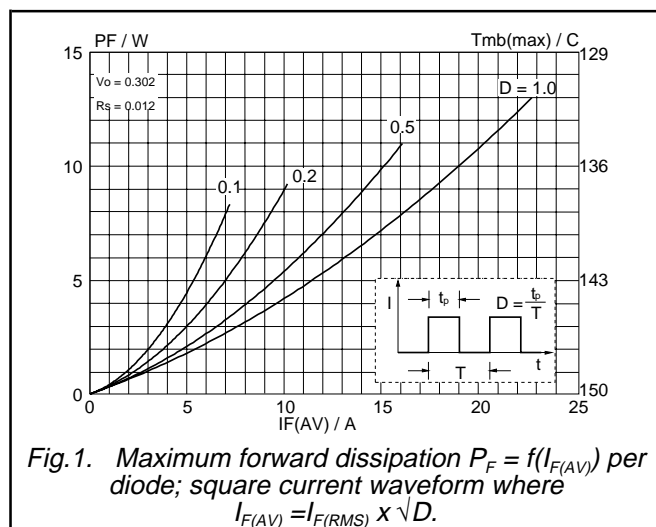
STATIC CHARACTERISTICS

$T_j = 25\text{ °C}$ unless otherwise stated

| SYMBOL | PARAMETER | CONDITIONS | MIN. | TYP. | MAX. | UNIT |
|--------|----------------------------------|---|------|------|------|---------------|
| V_F | Forward voltage (per diode) | $I_F = 20\text{ A}; T_j = 125\text{ °C}$ | - | 0.55 | 0.60 | V |
| | | $I_F = 30\text{ A}; T_j = 125\text{ °C}$ | - | 0.67 | 0.72 | V |
| | | $I_F = 30\text{ A}$ | - | 0.71 | 0.76 | |
| I_R | Reverse current (per diode) | $V_R = V_{RWM}$ | - | 100 | 200 | μA |
| | | $V_R = V_{RWM}; T_j = 125\text{ °C}$ | - | 12 | 40 | mA |
| C_d | Junction capacitance (per diode) | $f = 1\text{ MHz}; V_R = 5\text{ V}; T_j = 25\text{ °C to }125\text{ °C}$ | - | 800 | - | pF |

Rectifier diodes schottky barrier

PBYR3045PT series



Rectifier diodes schottky barrier

PBYR3045PT series

MECHANICAL DATA

Dimensions in mm

Net Mass: 5 g

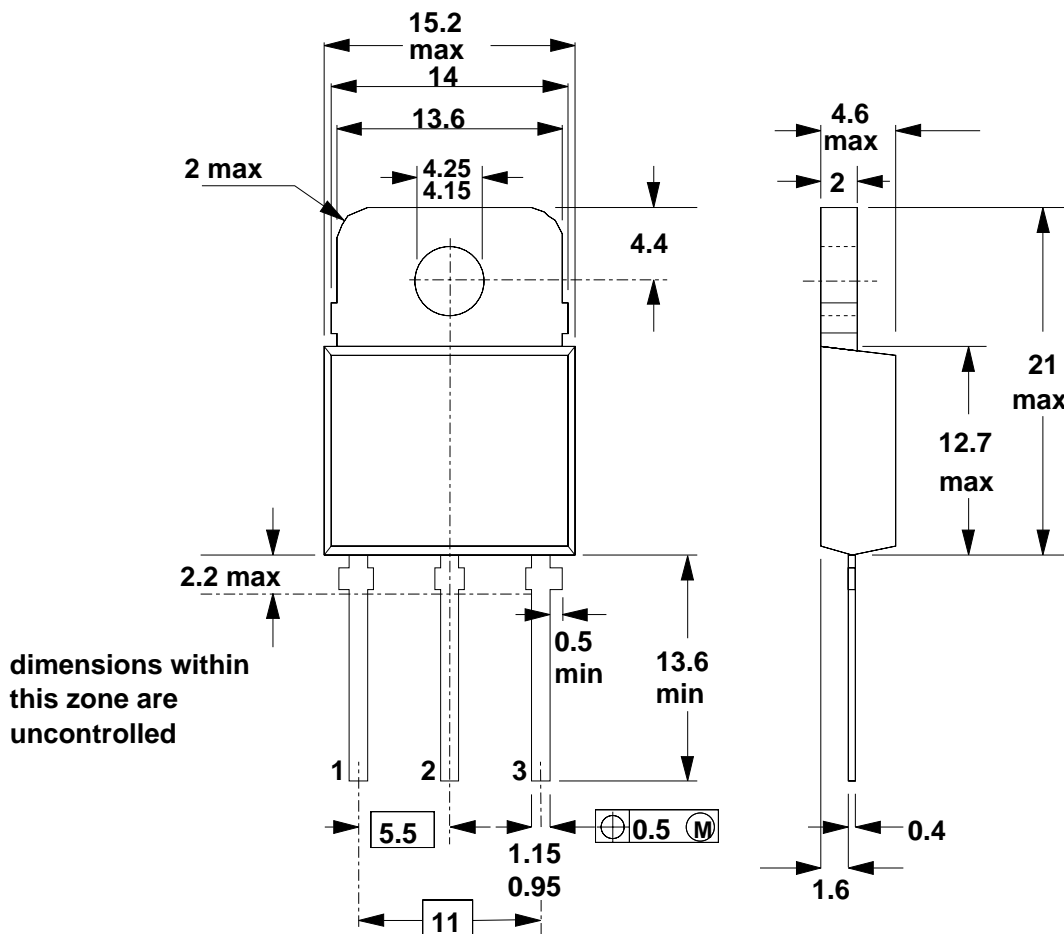


Fig.7. SOT93; pin 2 connected to mounting base.

Notes

1. Refer to mounting instructions for SOT93 envelope.
2. Epoxy meets UL94 V0 at 1/8".

Rectifier diodes schottky barrier

PBYR3045PT series

DEFINITIONS

| | |
|--|---|
| Data sheet status | |
| Objective specification | This data sheet contains target or goal specifications for product development. |
| Preliminary specification | This data sheet contains preliminary data; supplementary data may be published later. |
| Product specification | This data sheet contains final product specifications. |
| Limiting values | |
| Limiting values are given in accordance with the Absolute Maximum Rating System (IEC 134). Stress above one or more of the limiting values may cause permanent damage to the device. These are stress ratings only and operation of the device at these or at any other conditions above those given in the Characteristics sections of this specification is not implied. Exposure to limiting values for extended periods may affect device reliability. | |
| Application information | |
| Where application information is given, it is advisory and does not form part of the specification. | |
| © Philips Electronics N.V. 1996 | |
| All rights are reserved. Reproduction in whole or in part is prohibited without the prior written consent of the copyright owner. | |
| The information presented in this document does not form part of any quotation or contract, it is believed to be accurate and reliable and may be changed without notice. No liability will be accepted by the publisher for any consequence of its use. Publication thereof does not convey nor imply any license under patent or other industrial or intellectual property rights. | |

LIFE SUPPORT APPLICATIONS

These products are not designed for use in life support appliances, devices or systems where malfunction of these products can be reasonably expected to result in personal injury. Philips customers using or selling these products for use in such applications do so at their own risk and agree to fully indemnify Philips for any damages resulting from such improper use or sale.